

# COVID-19 symptoms? Sydney Care can help.

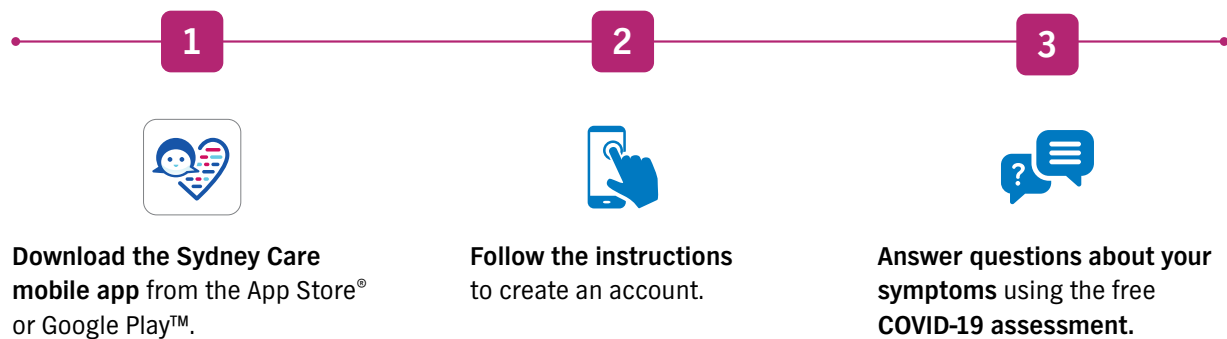
Check your potential risk quickly with the 24/7 Sydney Care mobile app.

The free Sydney Care<sup>SM</sup> mobile app is a quick and easy way to get health answers — without leaving home.



## Assess your symptoms

If you're not feeling well, you can assess your symptoms on Sydney Care in three easy steps:



## Connect with a doctor

If you need medical care after you assess your symptoms, the app will connect you to a doctor through a LiveHealth Online video session or Virtual Care text session.

The doctor you see through your telehealth visit can evaluate your symptoms, help you understand whether you're at risk for COVID-19, and let you know whether you need to visit a local health care provider for COVID-19 testing.



## How much does it cost?

The Sydney Care Coronavirus Assessment is always free. Between now and June 14, 2020, you can get one Virtual Care text session for free. Additional Virtual Care text sessions cost \$19 each. Also between now and June 14, 2020, your LiveHealth Online visit is no cost.\*



## Get started now

Download the free Sydney Care mobile app. Within minutes, you'll be able to check your symptoms and connect to care.



Visit [empireblue.com/coronavirus](https://empireblue.com/coronavirus) or the CDC website at [cdc.gov/coronavirus](https://cdc.gov/coronavirus) to learn more about COVID-19.

\* Most plans include telehealth as part of their benefits. If telehealth isn't part of your plan's benefits, you may have out-of-pocket expenses for this service. Some members in New York may already have Virtual Care text session and LiveHealth Online video visits included as part of their benefit plan and may receive unlimited free text and video visits.

The Sydney Care COVID-19 assessment is based on guidelines issued by the Centers for Disease Control and Prevention, and reviewed and approved by Anthem, Inc.'s Clinical Solutions team.

Sydney Care is offered through an arrangement with CareMarket, Inc. Sydney Health and Sydney Care are service marks of CareMarket Inc., ©2020.

Services provided by Empire HealthChoice HMO, Inc. and/or Empire HealthChoice Assurance, Inc., dba Empire BlueCross BlueShield. Independent licensees of the Blue Cross and Blue Shield Association, an association of independent Blue Cross and Blue Shield plans.

12258NYMENEBS 03/20